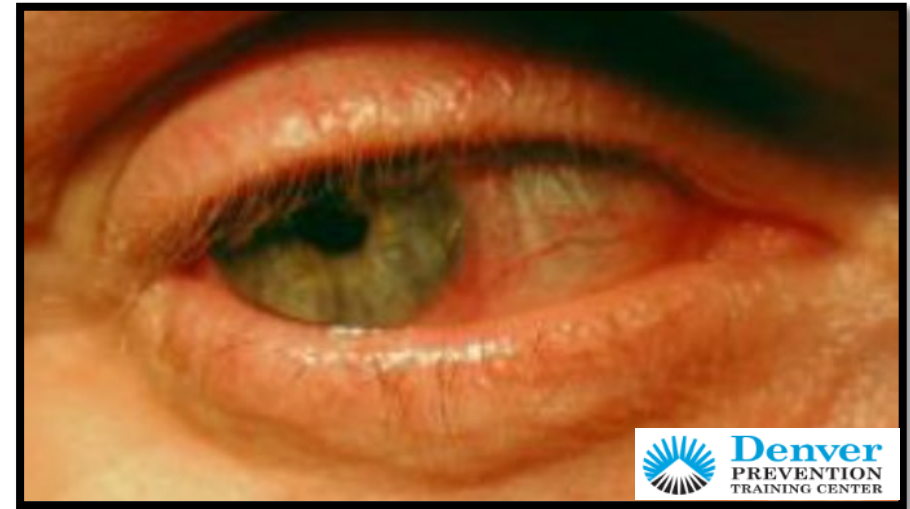


# Neuro/Ocular Syphilis

**Can occur at any stage of syphilis**

## **Symptoms**

- Visual changes or blindness (Uveitis)
- Hearing loss
- Headache
- Seizures
- Stroke like symptoms
- Unsteady gait,
- Acute meningitis
- Confusion
- Poor concentration
- Memory loss
- Dementia
- Psychosis
- Depression or irritability
- Muscle contractions or atrophy



Delayed or untreated symptoms can progress to permanent vision loss.

**Clients with a syphilis diagnosis and neuro/ocular symptoms should be referred for an immediate ophthalmologic evaluation and lumbar puncture for VDRL screening.**