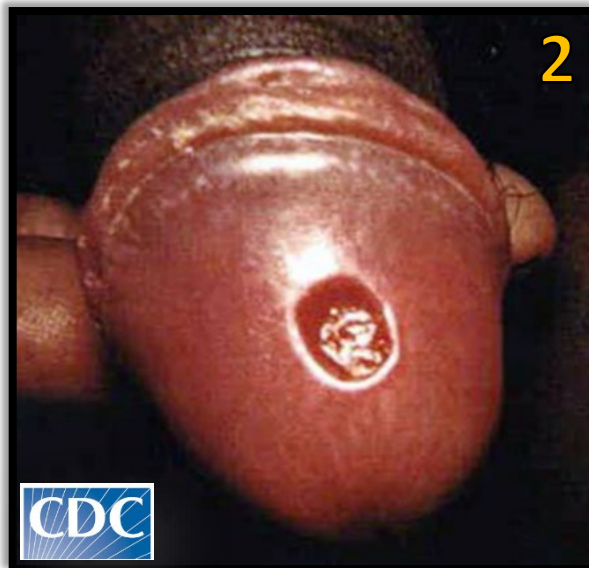
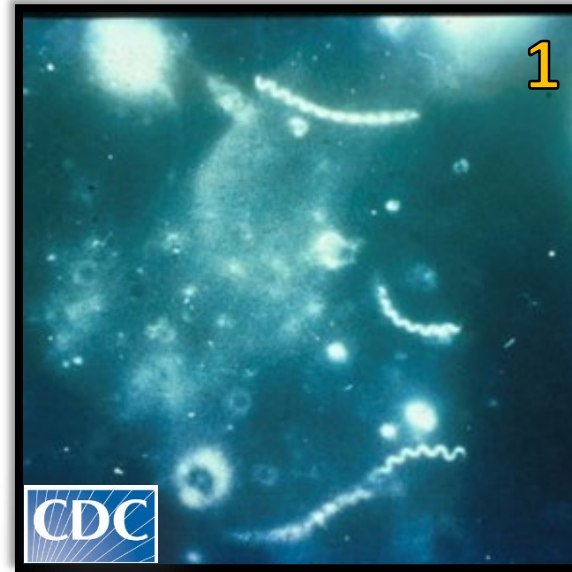


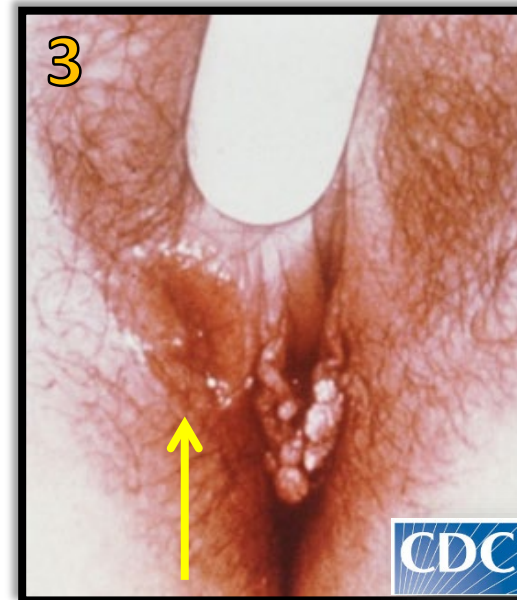
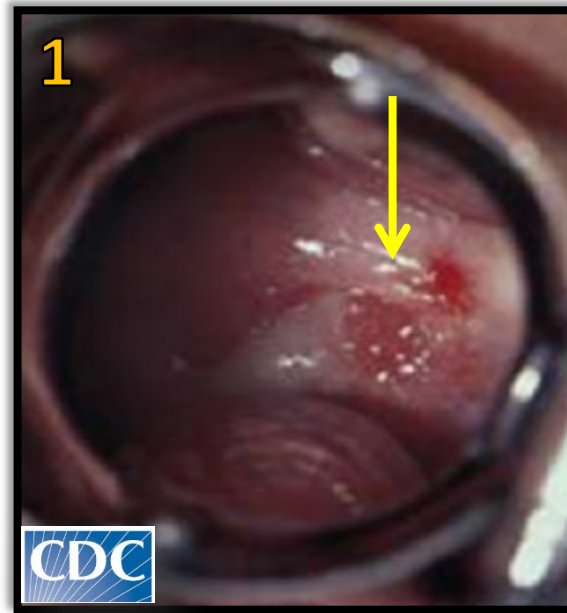
Primary Syphilis

1. Spirochetes
2. Primary chancre on penis



Primary Syphilis

1. Primary chancre on cervix
2. Primary chancre on labia
3. Primary chancre on labia and herpes
4. Primary chancre on labia - "Kissing Lesions"



Primary Syphilis

other common sites

1. Primary chancre on tongue
2. Primary chancre in mouth
3. Primary chancre on lower lip
4. Primary chancre - anal
5. Primary chancre on finger

